

**Smac/Diablo Antibody**  
**Rabbit mAb**  
**Catalog # AP90708****Specification**

---

**Smac/Diablo Antibody - Product Information**

Application	WB, IHC, FC, ICC, IP
Primary Accession	<a href="#">Q9NR28</a>
Reactivity	Rat
Clonality	Monoclonal
<b>Other Names</b>	
SMAC; DFNA64; DIABLO; SMAC3;	
Isotype	Rabbit IgG
Host	Rabbit
Calculated MW	27131 Da

**Smac/Diablo Antibody - Additional Information**

Dilution	WB~~1:1000 IHC~~1:100~500 FC~~1:10~50 ICC~~N/A IP~~N/A
Purification	Affinity-chromatography
Immunogen	A synthesized peptide derived from human Smac/Diablo
Description	Smac/Diablo is a 21 kDa mammalian mitochondrial protein that functions as a regulatory component during apoptosis. Upon mitochondrial stress, Smac/Diablo is released from mitochondria and competes with caspases for binding of IAPs (inhibitor of apoptosis proteins). The interaction of Smac/Diablo with IAPs relieves the inhibitory effect of the IAPs on caspases.
Storage Condition and Buffer	Rabbit IgG in phosphate buffered saline , pH 7.4, 150mM NaCl, 0.02% sodium azide and 50% glycerol. Store at +4°C short term. Store at -20°C long term. Avoid freeze / thaw cycle.

**Smac/Diablo Antibody - Protein Information****Name** DIABLO ([HGNC:21528](#))**Function**

Promotes apoptosis by activating caspases in the cytochrome c/Apaf-1/caspase-9 pathway. Acts by opposing the inhibitory activity of inhibitor of apoptosis proteins (IAP). Inhibits the activity of

BIRC6/BRUCE by inhibiting its binding to caspases (PubMed:<a href="http://www.uniprot.org/citations/15200957" target="\_blank">15200957</a>, PubMed:<a href="http://www.uniprot.org/citations/36758104" target="\_blank">36758104</a>, PubMed:<a href="http://www.uniprot.org/citations/36758105" target="\_blank">36758105</a>, PubMed:<a href="http://www.uniprot.org/citations/36758106" target="\_blank">36758106</a>).

#### Cellular Location

Mitochondrion. Cytoplasm, cytosol Note=Released into the cytosol in a PARL-dependent manner when cells undergo apoptosis.

#### Tissue Location

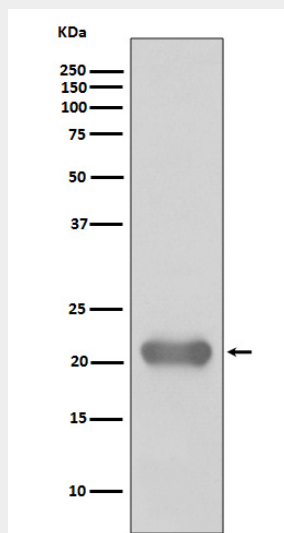
Ubiquitously expressed with highest expression in testis. Expression is also high in heart, liver, kidney, spleen, prostate and ovary. Low in brain, lung, thymus and peripheral blood leukocytes. Isoform 3 is ubiquitously expressed

### Smac/Diablo Antibody - Protocols

Provided below are standard protocols that you may find useful for product applications.

- [Western Blot](#)
- [Blocking Peptides](#)
- [Dot Blot](#)
- [Immunohistochemistry](#)
- [Immunofluorescence](#)
- [Immunoprecipitation](#)
- [Flow Cytometry](#)
- [Cell Culture](#)

### Smac/Diablo Antibody - Images



Western blot analysis of Smac/Diablo expression in Jurkat cell lysate.